

LCSD Planning Commission

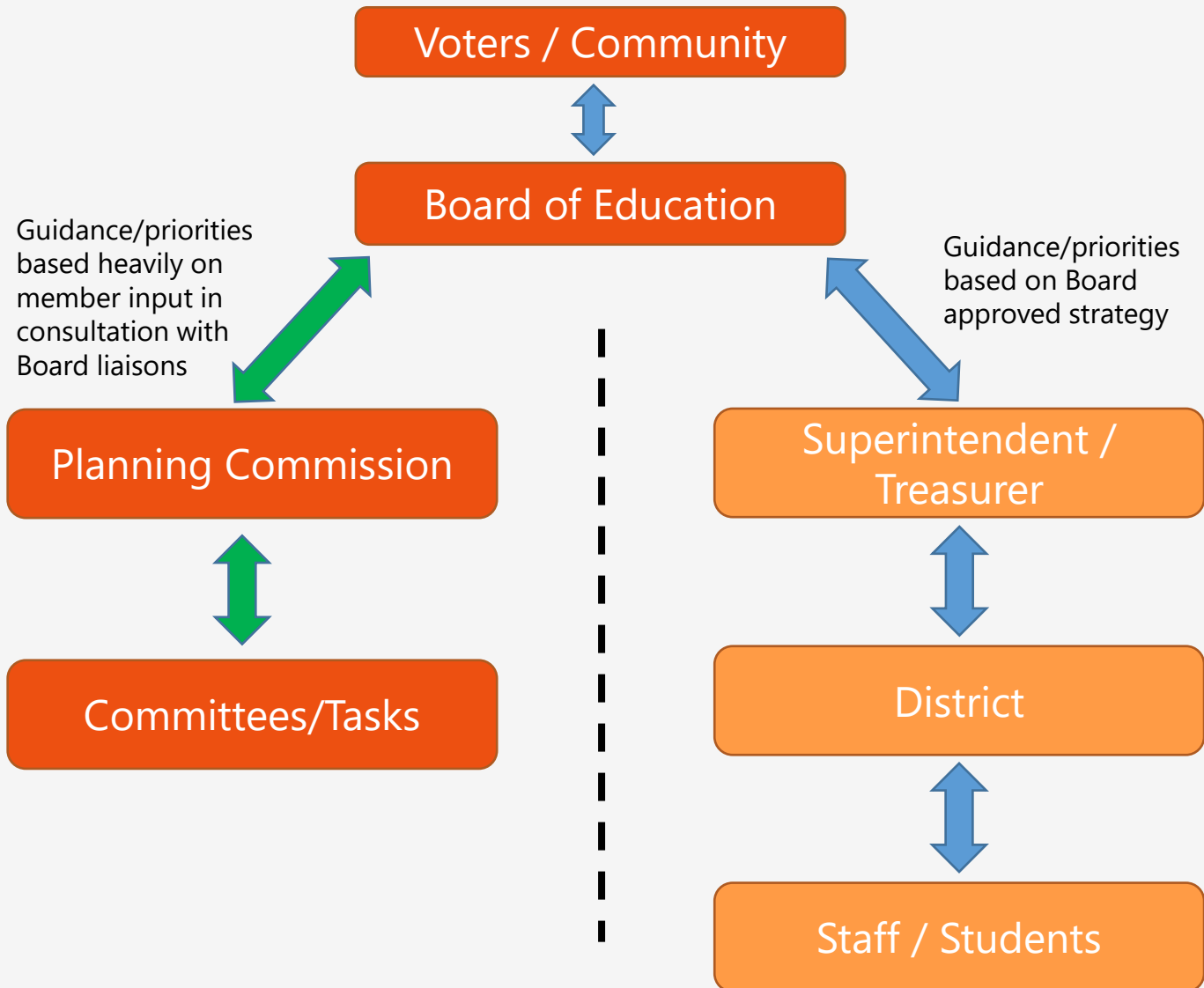
Organization and Alignment Feedback

February 2022



Preparing Students For Tomorrow, Today

Current Commission organization and functioning



Pro:

- Board alignment on Commission analytical strategy
- Significant independence from District in identifying and analyzing opportunities or gaps
- Alternative perspectives via Commission members and their community contacts

Con:

- Low visibility of opportunities beyond the more public topics or 'low hanging fruit'
- Committee structure is not optimal for identifying experts/interest in subject areas
- Lack of coordination with District leadership/staff
- Low alignment with District strategy, analytical needs and specific tactical objectives

Commission observations and suggestions

- *After almost two years of productive effort, the Commission needs a renewal to remain engaged*
- *Re-orient the Commission to tightly align with the Superintendent and District leadership providing clear directives and purpose*
 - Directly connect specific Commission efforts with District strategies
 - Increase coordination with District leadership/staff
 - Develop/assign periodic objectives that support the District's strategic goals and current analytical needs
 - Remove the administrative/legal burden from volunteers to District staff
- *Utilize the Commission as a sounding board*
 - Continue efforts to appoint diverse Commission members representative of the community at large
 - Engage with leadership directly to provide early perspective on major issues/opportunities and create a conduit for community input