



**PUBLIC  
FINANCE  
RESOURCES**

EMPOWERING THE PUBLIC'S FINANCIAL LEADERS

# Per Pupil Expenditure Benchmarks – “Light”

Loveland CSD

April 19, 2016

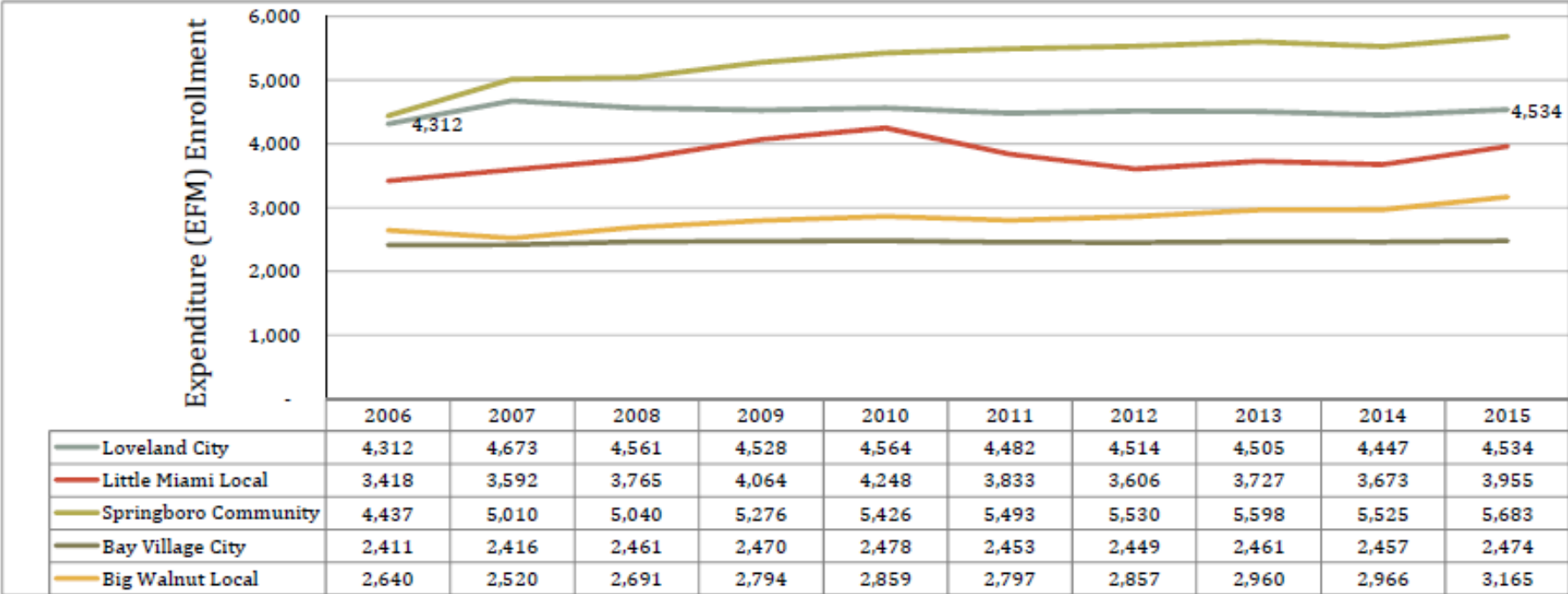


# Introduction

The following information compiles the preliminary results from the Ohio Department of Education. The focus of this limited report is enrollment and per pupil expenditures. The last year of current data is FY 2015.

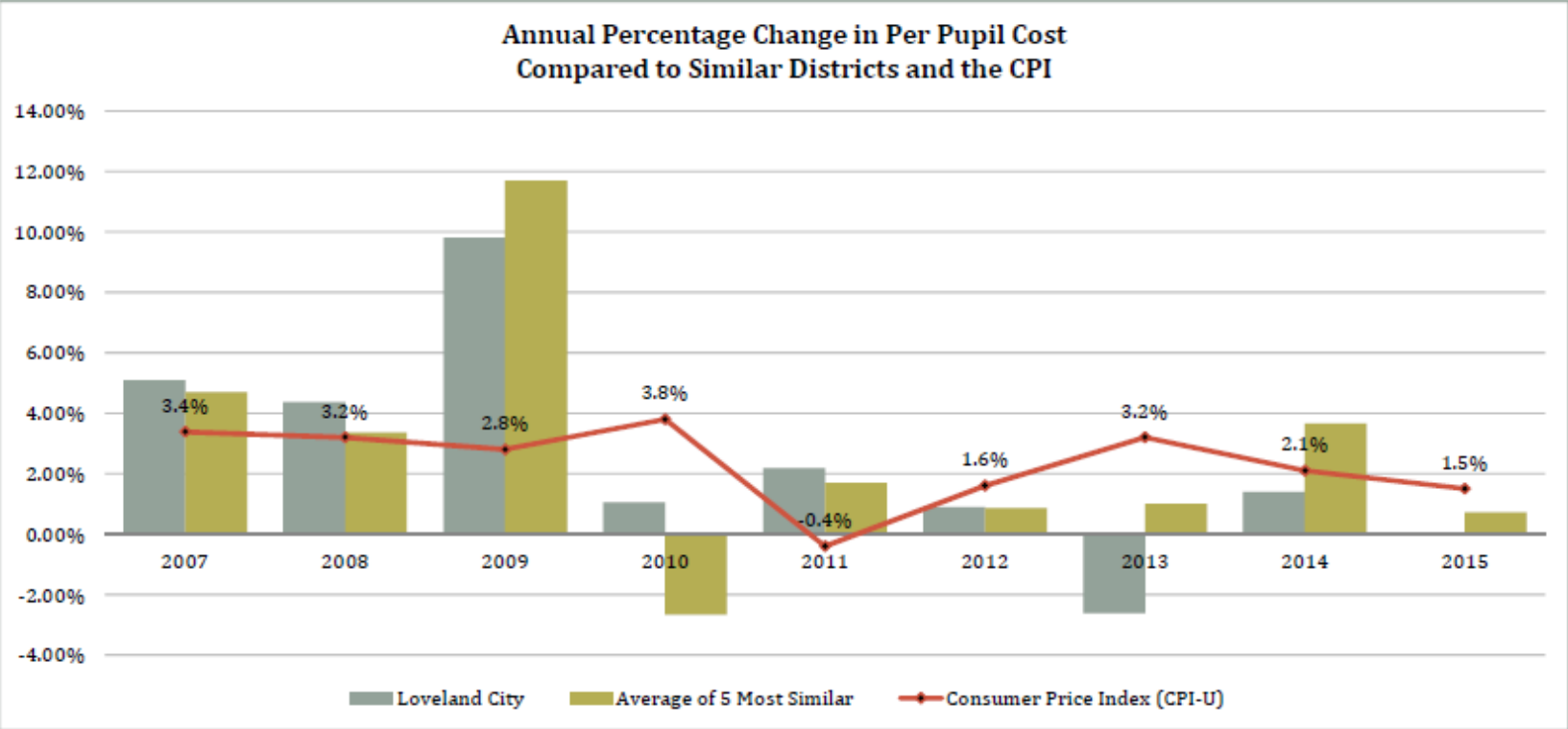


# Enrollment Trended Up (Slightly)





# Expenditure Cost Trended Lower Than Similar Districts

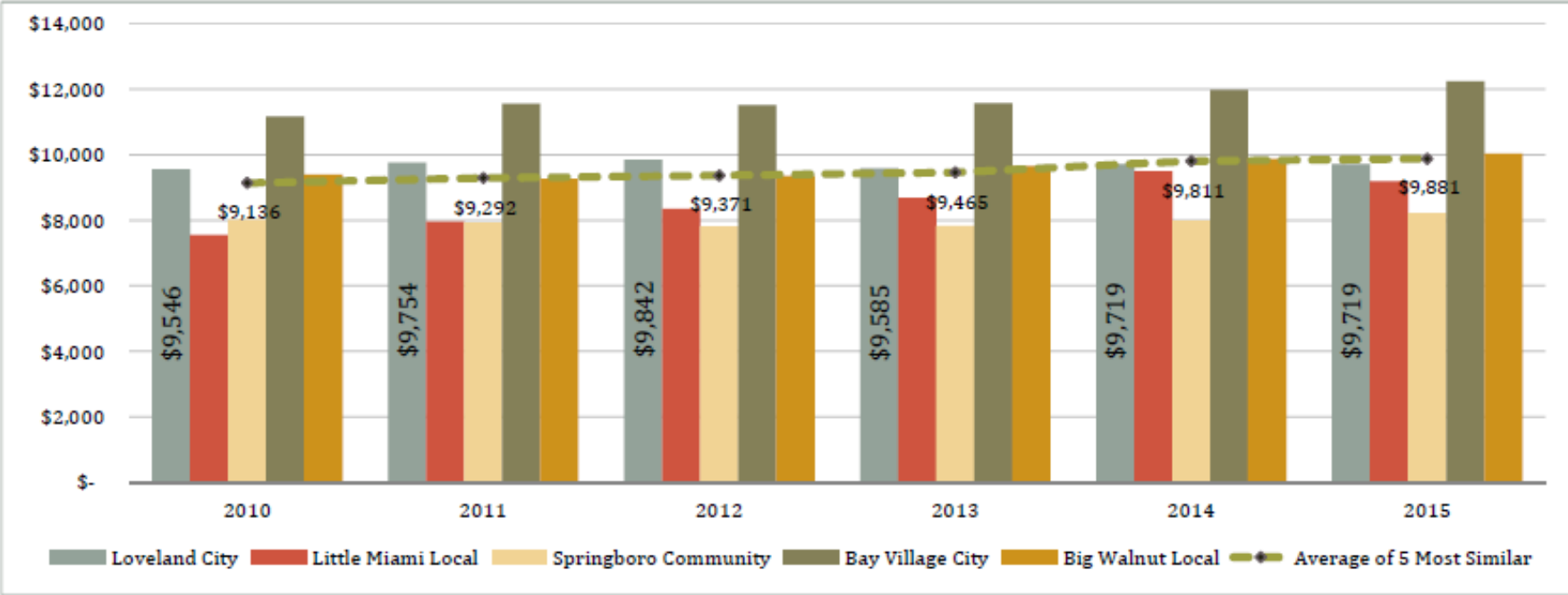


Average Annual Percentage Change: 2005-2015	
Loveland City	2.46%
Average of 5 Most Similar	2.78%
Consumer Price Index (CPI-U)	1.95%



# Per Pupil Cost Unchanged

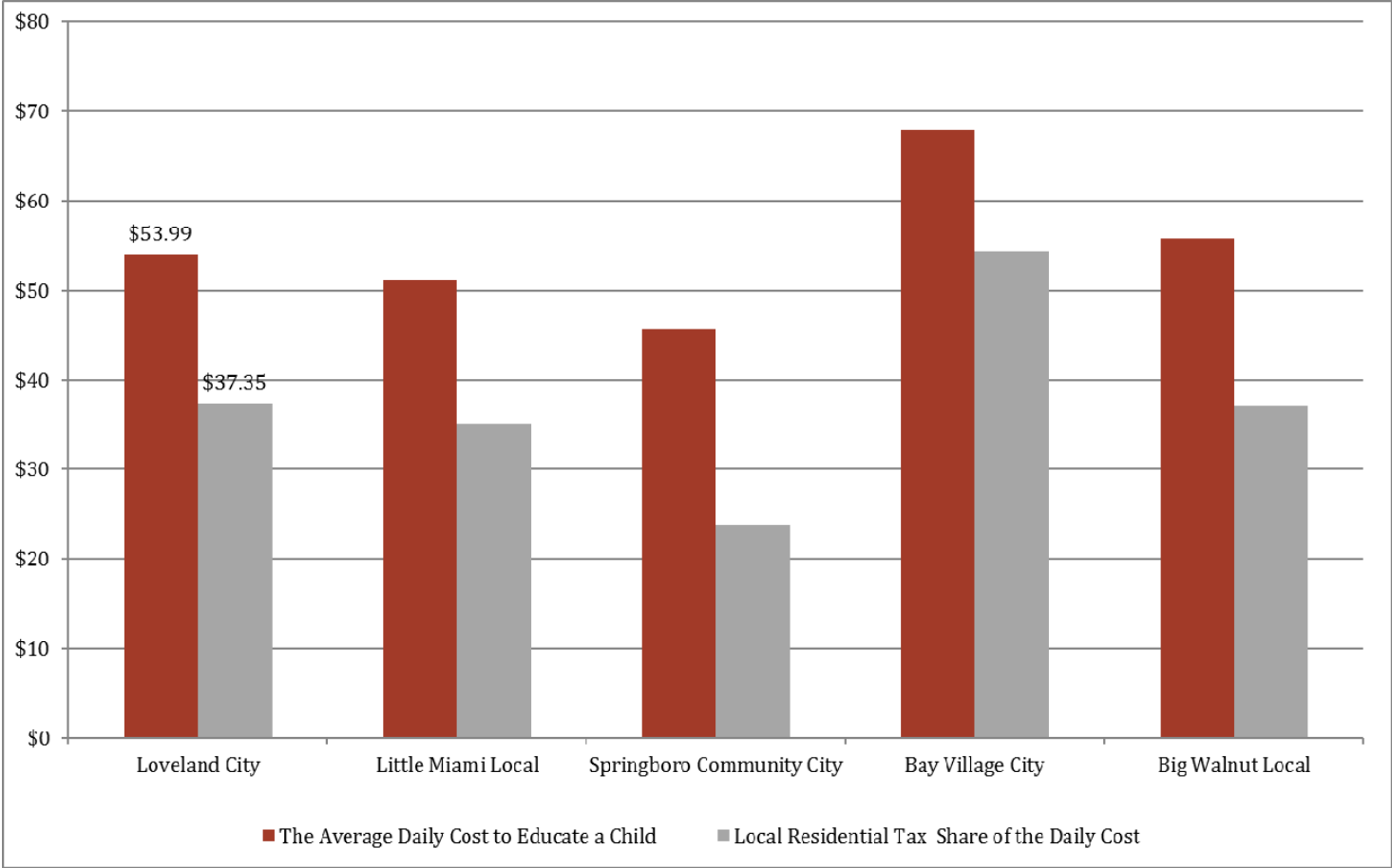
FY 2015





# Daily Cost to Educate a Child

FY 2015





# Allocation of Daily Cost

FY 2015

